

THE SCHOOL DISTRICT OF PHILADELPHIA
Office of Capital Programs
440 North Broad Street, 3rd Floor – Suite 371
Philadelphia, PA 19130

TELEPHONE: (215) 400-4730

Addendum No. 01

Subject: John H. Webster – Classroom Modernization
SDP Contract Nos. B-051C, B-054C, of 2017/18

Location: JH Webster ES
3400 Frankford Ave.
Philadelphia, Pennsylvania 19134

This Addendum, dated 9th of May, 2018, shall modify and become part of the Contract Documents for the work of this project. Any items not mentioned herein, or affected by, shall be performed strictly in accordance with the original documents.

The following items, clarifications and/or revisions are to be included in the Contract Documents:

BIDDER'S QUESTIONS

1. **Question:** Due to the scope of work for all projects, the substantial completion date is unachievable. Along with lost time for moving of furniture and equipment before start of project. Can the date for substantial completion be extended?

Response: No.

2. **Question:** Visual Display Surfaces - in spec there is a note if new boards are not installed in time, to use temporary boards as necessary, how many temporary boards are we to provide per classroom?

Response: Temporary boards do not need to be provided.

3. **Question:** Do we need to provide temporary window shades, if new ones are not installed before start of school?

Response: No. Existing shades are to be removed and salvaged/protected and reinstalled until new shades can be installed.

4. **Question:** Wood Floor Refinishing- some projects call for 2 coats of stain, can we forgo the stain and just use 2 coats of sealer and 2 coats of finish for all projects. You are adding on time to an already accelerated schedule.

Response: Sand, seal, and finish the wood floors in accordance with the specifications. Omit staining of the floor.

5. **Question:** Have you checked on the choices of accent colors for the VCT tile? The colors may be a stock color, but do they have enough on hand, if not they may not be readily available for the substantial completion date.

Response: Armstrong has been made aware of this project and its approximate square footage needs. Contractor to provide updated information on each color's availability immediately after NTP.

6. **Question:** Can you please include spec for electrostatic painting.

Response: See Electrostatic Paint spec in Addendum #2.

7. **Question:** The electrical drawings were not pdf'd to scale and are shown scale to fit. Please provide corrected electrical drawings to scale.

Response: Submitted electrical pdf drawings are matching Architectural pdf's and are scaled correctly.

8. **Question:** Please confirm the 2 panelboards are being replaced in kind and feeder conduit/conductors are being reutilized.

Response: The two panelboards are beng replaced in kind except with 42 pole circuit breakers, existing feeder conduit/conductors are being reutilized.

9. **Question:** Where is location of existing IT rack shown on the electrical floor plans for takeoffs?

Response: Existing IDF room shown on revised plans, attached.

CHANGES TO DRAWINGS

DRAWING I4.3 – LARGE SCALE LAYOUTS - CLASSROOMS

1. **REVISE** markerboard to larger markerboard.
2. **REVISE** markerboard to tack board.
3. **REVISE** base cabinet height.

DRAWING ED111A – FIRST LEVEL – LIGHTING FLOOR PLAN – DEMOLITION

4. **ADD** existing lights in toilet and storage.

DRAWING ED111B – FIRST LEVEL – LIGHTING FLOOR PLAN – DEMOLITION

1. **ADD** existing lights in toilet and storage.
2. **ADD** location of existing IDF room 120.

DRAWING ED112A – SECOND LEVEL – LIGHTING FLOOR PLAN – DEMOLITION

1. **ADD** existing lights in toilet and storage.

DRAWING ED121B – FIRST LEVEL – POWER FLOOR PLAN – DEMOLITION

1. **ADD** location of existing IDF room 120.

DRAWING E111A – FIRST LEVEL – LIGHTING FLOOR PLAN – NEW WORK

1. **ADD** new lights in toilet and storage.

DRAWING E111B – FIRST LEVEL – LIGHTING FLOOR PLAN – NEW WORK

1. **ADD** new lights in toilet and storage.
2. **ADD** location of existing IDF room 120.

DRAWING E112A – SECOND LEVEL – LIGHTING FLOOR PLAN – NEW WORK

1. **ADD** new lights in toilet and storage.

DRAWING E121B – FIRST LEVEL – POWER FLOOR PLAN – NEW WORK

1. **ADD** location of existing IDF room 120.

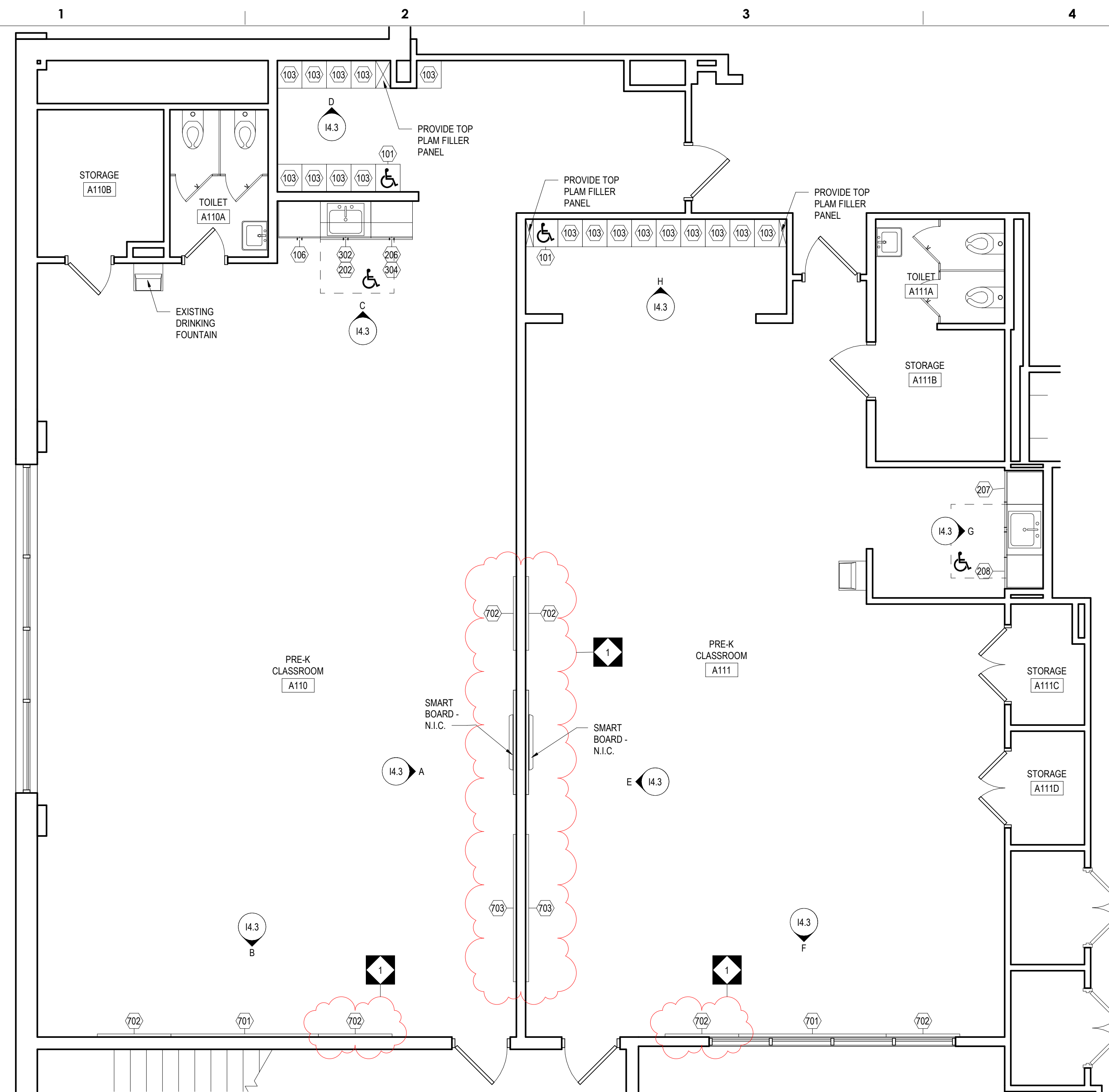
DRAWING E401 – ELECTRICAL PANELBOARD SCHEDULES

1. **REVISE** Panelboard schedule LF and LK existing and new.
2. **ADD** Power riser diagrams existing and new.

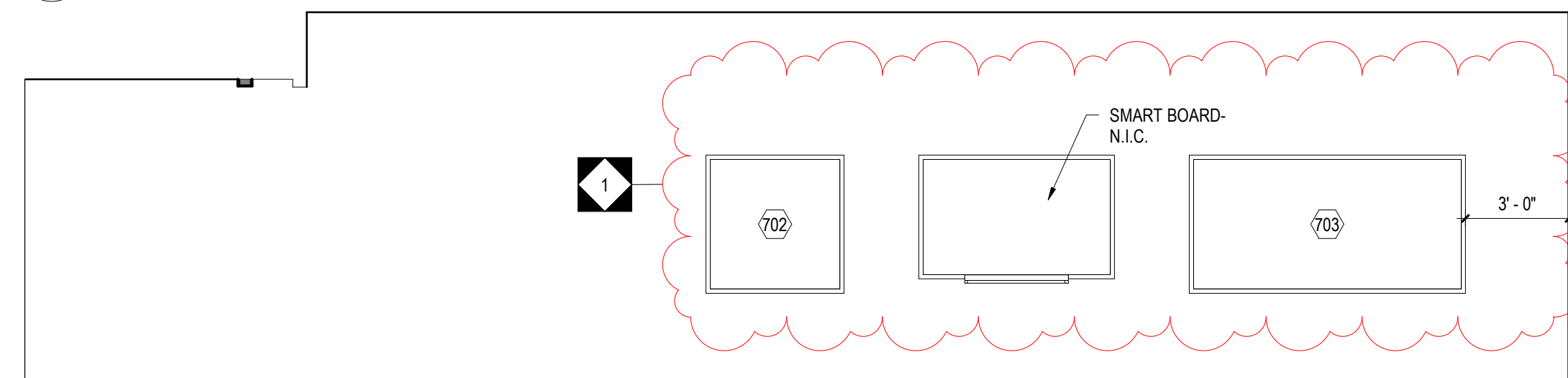
ATTACHMENTS

DRAWING I4.3	LARGE SCALE LAYOUTS - CLASSROOMS
DRAWING ED111A	FIRST LEVEL – LIGHTING FLOOR PLAN – DEMOLITION
DRAWING ED111B	FIRST LEVEL – LIGHTING FLOOR PLAN – DEMOLITION
DRAWING ED112A	SECOND LEVEL – LIGHTING FLOOR PLAN – DEMOLITION
DRAWING ED121B	FIRST LEVEL – POWER FLOOR PLAN – DEMOLITION
DRAWING E111A	FIRST LEVEL – LIGHTING FLOOR PLAN – NEW WORK
DRAWING E111B	FIRST LEVEL – LIGHTING FLOOR PLAN – NEW WORK
DRAWING E112A	SECOND LEVEL – LIGHTING FLOOR PLAN – NEW WORK
DRAWING E121B	FIRST LEVEL – POWER FLOOR PLAN – NEW WORK
DRAWING E401	ELECTRICAL PANELBOARD SCHEDULES

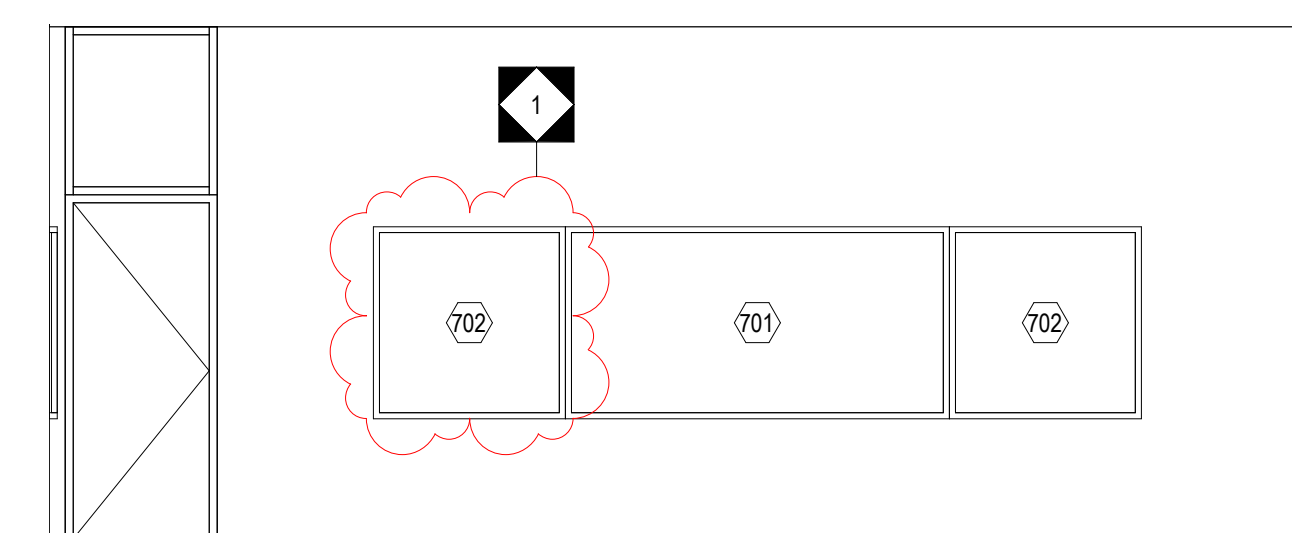
End of Addendum 01



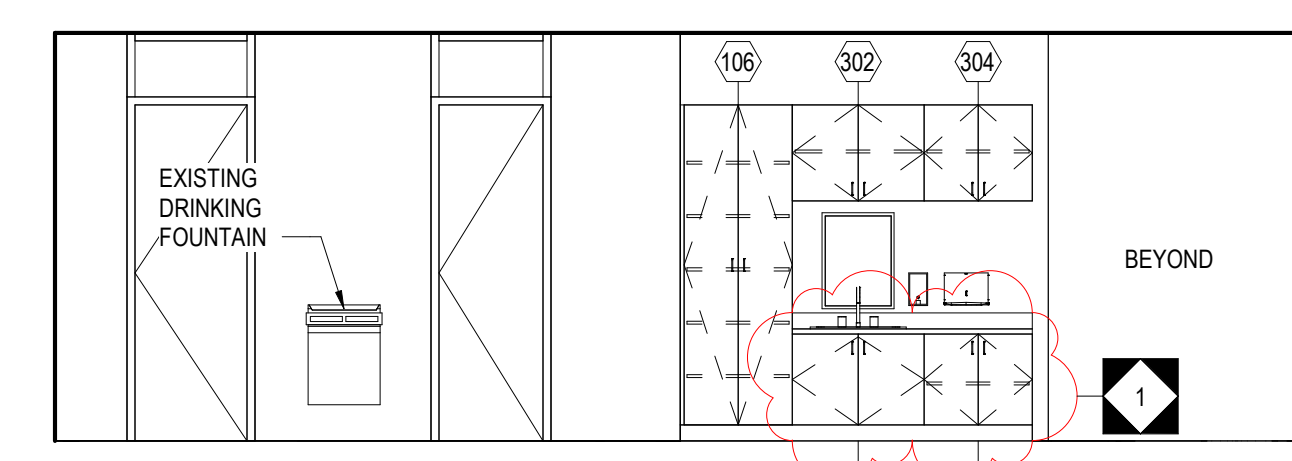
1 CLASSROOM LAYOUT - A110 & A111
1/4" = 1'-0"



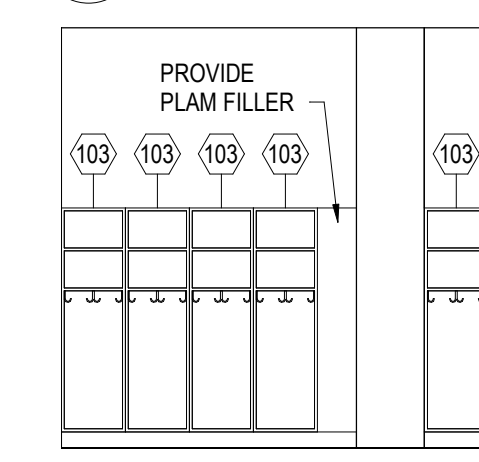
A INTERIOR ELEVATION A
1/4" = 1'-0"



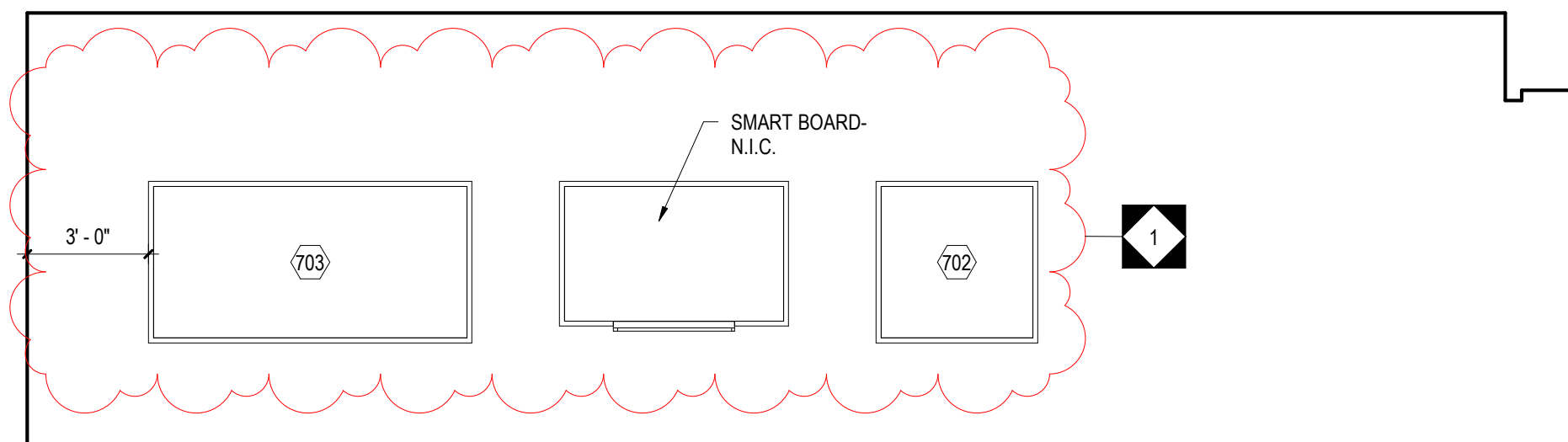
B INTERIOR ELEVATION B
1/4" = 1'-0"



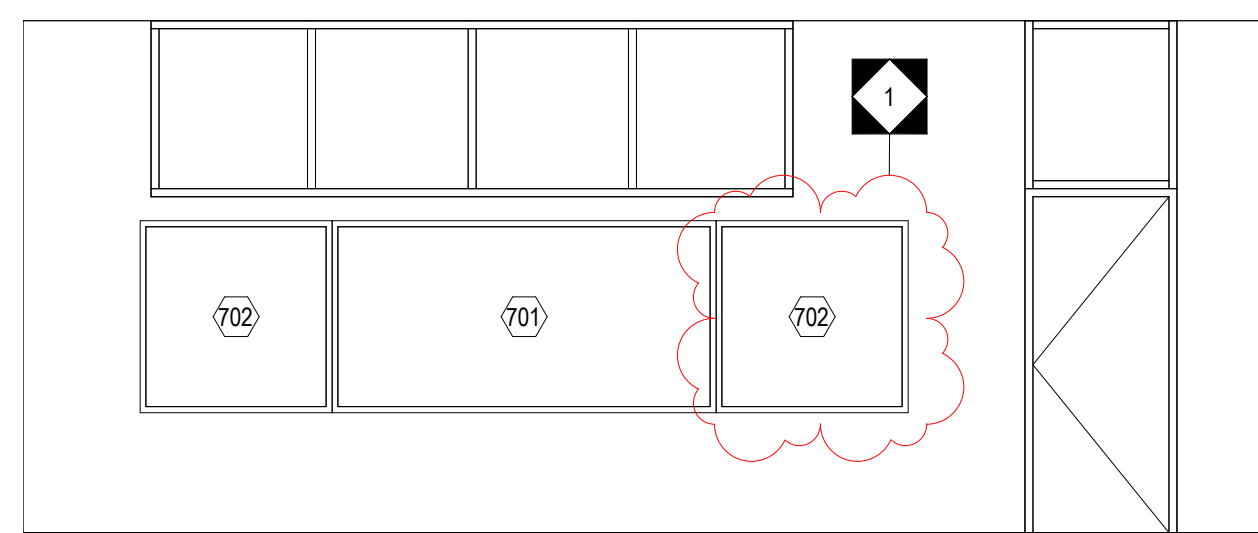
C INTERIOR ELEVATION C
1/4" = 1'-0"



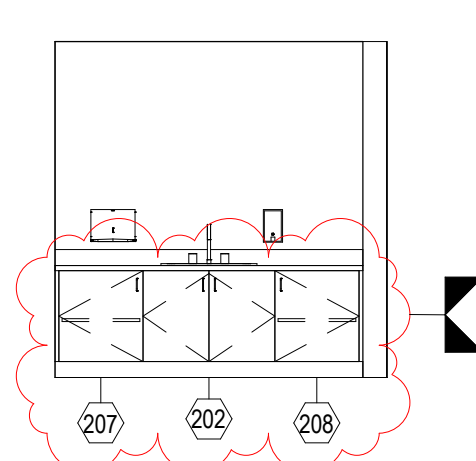
D INTERIOR ELEVATION D
1/4" = 1'-0"



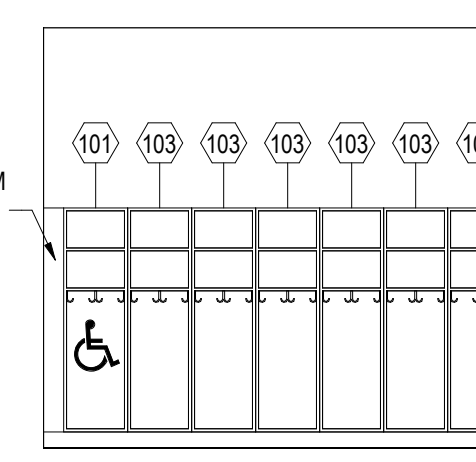
E INTERIOR ELEVATION E
1/4" = 1'-0"



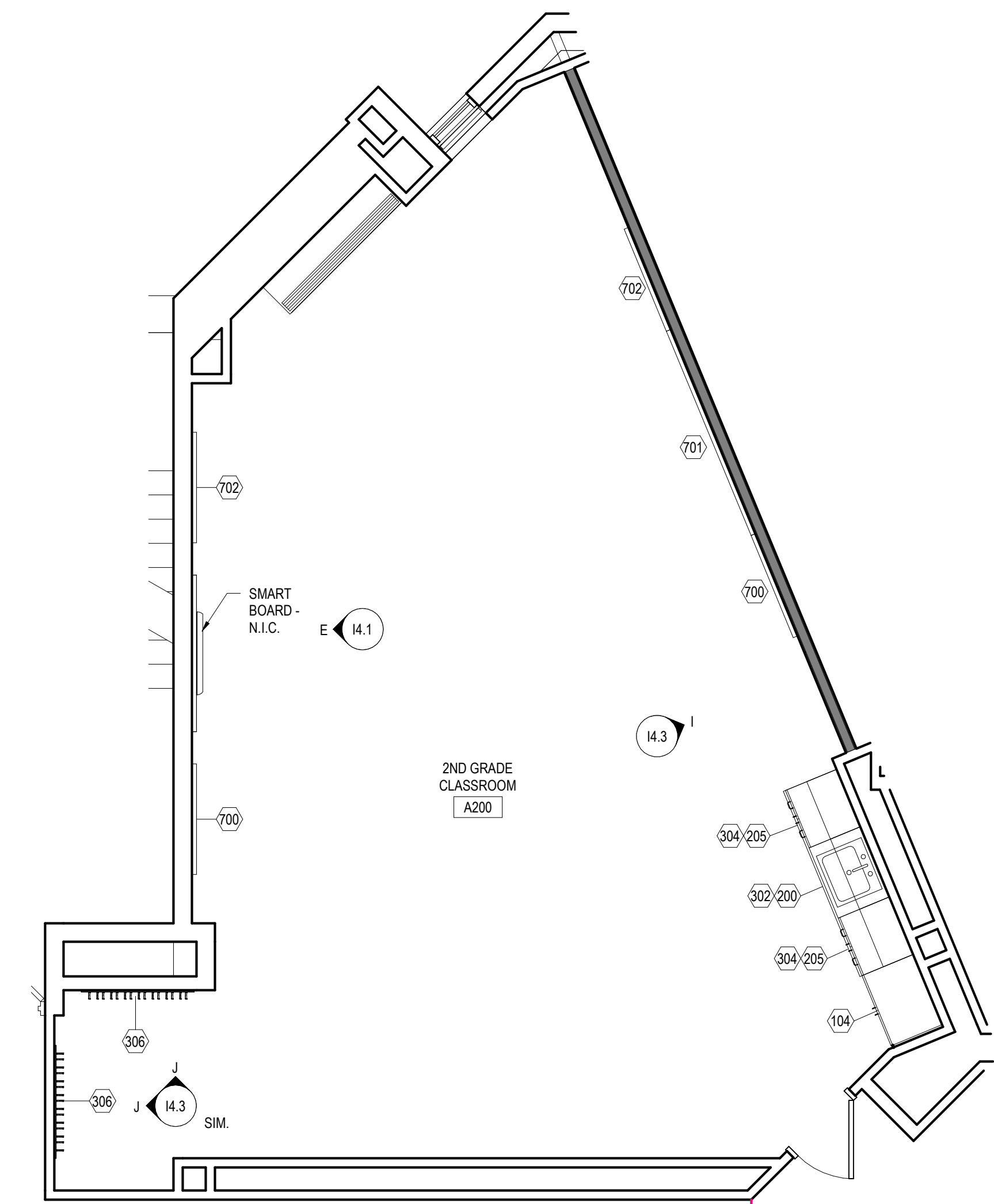
F INTERIOR ELEVATION F
1/4" = 1'-0"



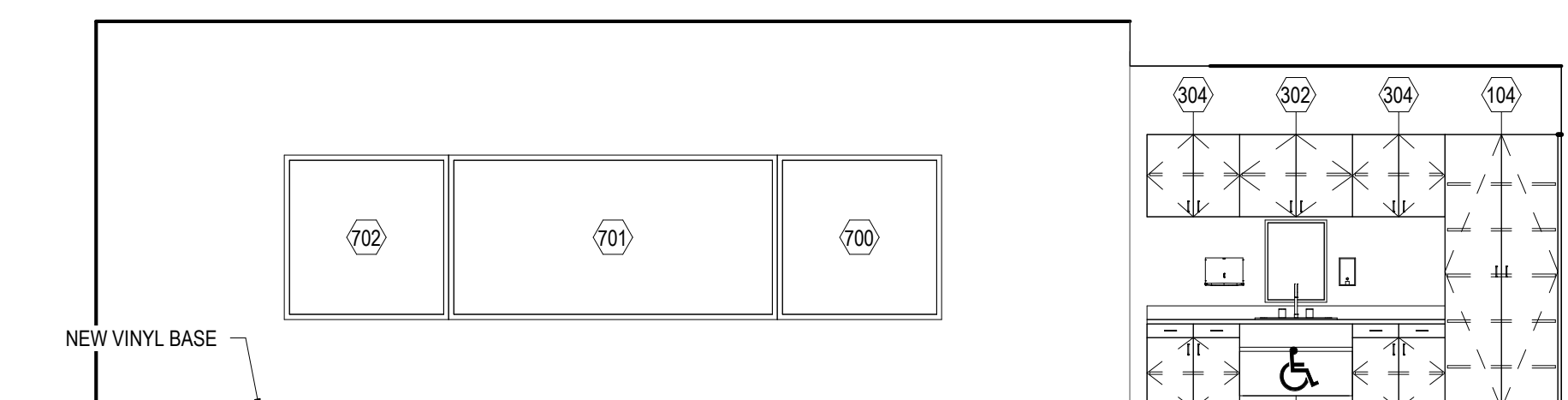
G INTERIOR ELEVATION G
1/4" = 1'-0"



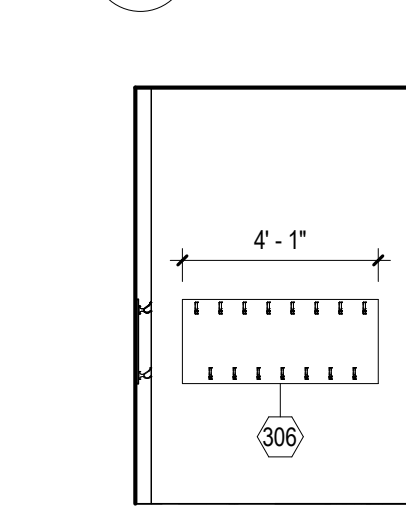
H INTERIOR ELEVATION H
1/4" = 1'-0"



2 CLASSROOM LAYOUT - A200
1/4" = 1'-0"



I INTERIOR ELEVATION I
1/4" = 1'-0"



J INTERIOR ELEVATION J
1/4" = 1'-0"

NOTE: EXISTING WALL MOUNTED ACCESSORIES TO BE REMOVED AND REINSTALLED AT HEIGHTS INDICATED ON ACCESSIBILITY STANDARDS ON SHEET A6.1

PRE-K MOUNTING HEIGHT SCHEDULE	
MARKER BOARD	2'-0" AFF TO BOTTOM EDGE
TACK BOARD	2'-0" AFF TO BOTTOM EDGE
BASE CABINETS	2'-2" AFF TO TOP OF CABINET
WALL CABINETS	7'-0" AFF TO TOP OF CABINET

GRADE 1-5 MOUNTING HEIGHT SCHEDULE	
MARKER BOARD	2'-6" AFF TO BOTTOM EDGE
TACK BOARD	2'-6" AFF TO BOTTOM EDGE
BASE CABINETS	2'-6" AFF TO TOP OF CABINET
WALL CABINETS	7'-0" AFF TO TOP OF CABINET

14.3 - GENERAL CASEWORK AND EQUIPMENT SCHEDULE		
NO	DESCRIPTION	DIMENSIONS
101	ADA OPEN STUDENT WARDROBE W/(1) DOUBLE HOOK & (2) SINGLE HOOKS EACH. MODIFIED TO INCLUDE (2) FIXED SHELVES ABOVE. SEE ADA KINDERGARTEN CUBBIE DETAIL.	16"W x 18"D x 60"H
103	OPEN STUDENT WARDROBE W/(1) DOUBLE HOOK & (2) SINGLE HOOKS EACH. MODIFIED TO INCLUDE (2) FIXED SHELVES ABOVE. SEE KINDERGARTEN CUBBIE DETAIL.	16"W x 18"D x 60"H
104	2-DOOR TALL STORAGE	33"W x 24"D x 84"H
106	2-DOOR TALL STORAGE	27"W x 24"D x 84"H
200	ADA VANITY SINK BASE CABINET	33"W x 24"D x 30"H
202	2-DOOR SINK BASE CABINET	33"W x 24"D x 28"H
205	2-DOOR/2-DRAWER BASE CABINET	27"W x 24"D x 30"H
206	2-DOOR BASE CABINET	27"W x 24"D x 28"H
207	1-DOOR BASE CABINET - LEFT HINGED	21"W x 24"D x 28"H
208	1-DOOR BASE CABINET - RIGHT HINGED	21"W x 24"D x 28"H
302	2-DOOR WALL CABINET	33"W x 14"D x 24"H
304	2-DOOR WALL CABINET	27"W x 14"D x 24"H
306	STUDENT COAT HOOKS - MODIFIED TO INCLUDE 4.75"H X 3/4" PLYWOOD W/ HIGH PRESSURE LAMINATE ON ALL EXPOSED SURFACE W/ (15) COAT HOOKS #0400 AND HEAVY DUTY SUPPORT BRACKETS PER MANF. RECOMMENDATIONS.	SEE ELEVATIONS
700	MARKERBOARD	4'-0"W x 4'-0"H
701	TACK BOARD	8'-0"W x 4'-0"H
702	TACK BOARD	4'-0"W x 4'-0"H
703	MARKERBOARD	8'-0"W x 4'-0"H

10	
9	
8	
7	
6	
5	
4	
3	
2	
1	

SCHOOL & LOCATION
JOHN H. WEBSTER
3400 FRANKFORD AVENUE,
PHILADELPHIA, PA 19134

PROJECT TITLE
CLASSROOM MODERNIZATION

DRAWING TITLE
LARGE SCALE LAYOUTS - CLASSROOMS

LOCATION NO.	FILE NO.
DRAWN BY	CHECKED BY
B-051C OF 2017 / 18	
B-054C OF 2017 / 18	

DRAWING NO.
14.3
SHEET OF

